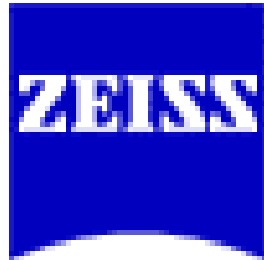


Komplexe holographisch-optische Bauelemente (KOMPHOR)

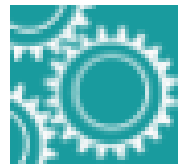
Projektpartner: Carl Zeiss AG, Jena,
Labor für Mikrostrukturierte Optik
Fresnel Optics GmbH, Apolda



Ziele: Herstellung komplexer beugungsoptischer Bauelemente durch holographische Lithographie;

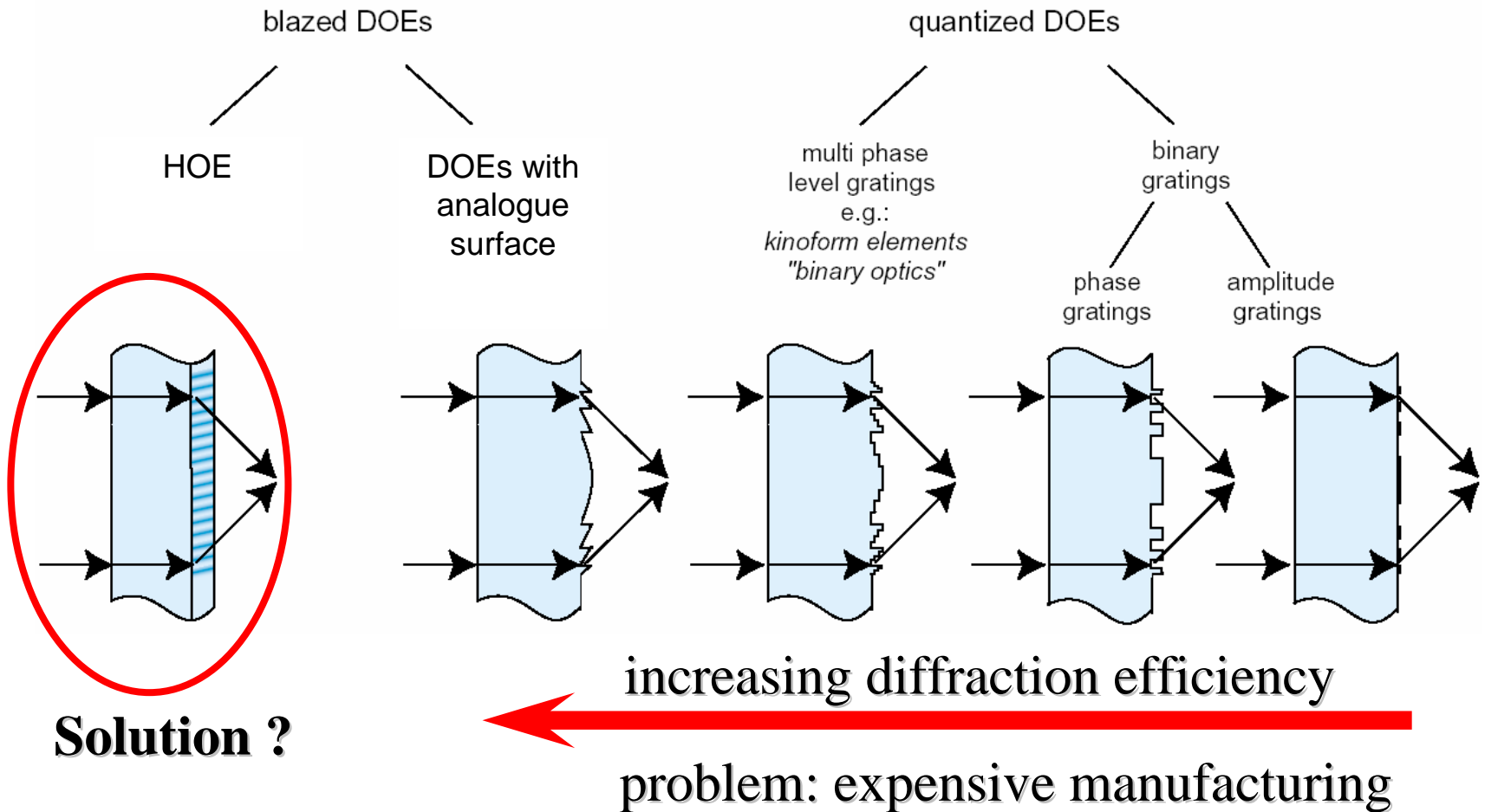
Herausforderungen:

Aufbauten zur holographischen Belichtung;
Analoge Photolackprozessierung



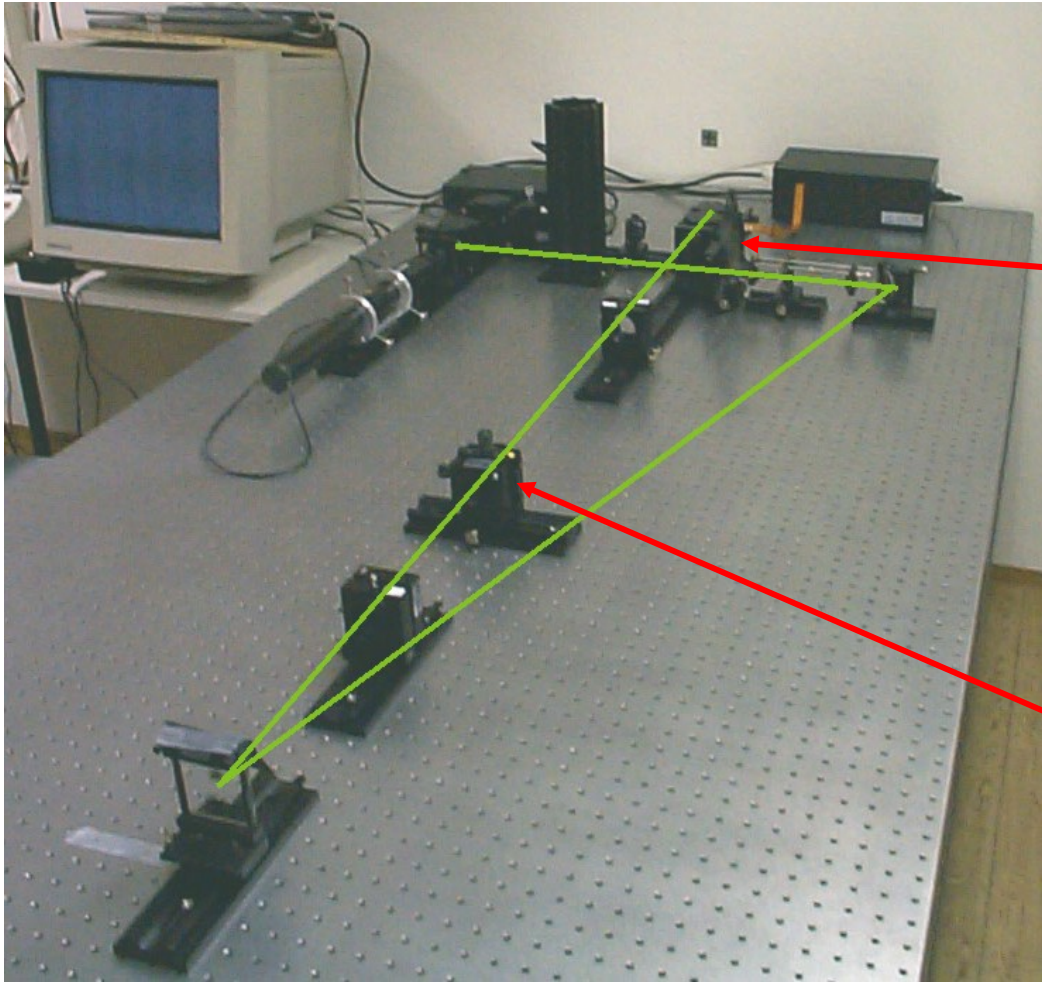
Project: KOMPHOR

KOMPHOR ~ Komplexe holographische Bauelemente

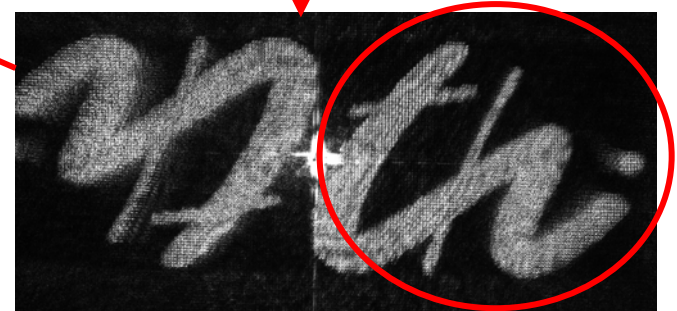
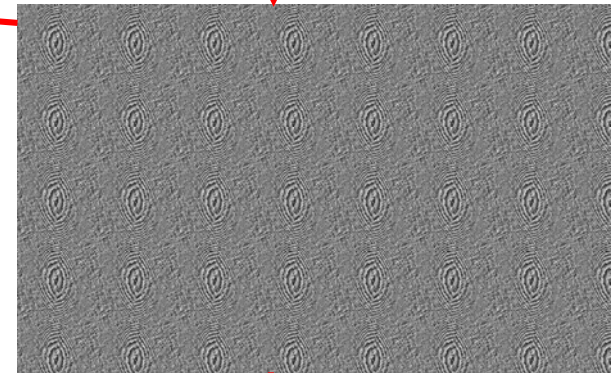


Project: KOMPHOR

Setup with Spatial Light Modulator (LCoS)

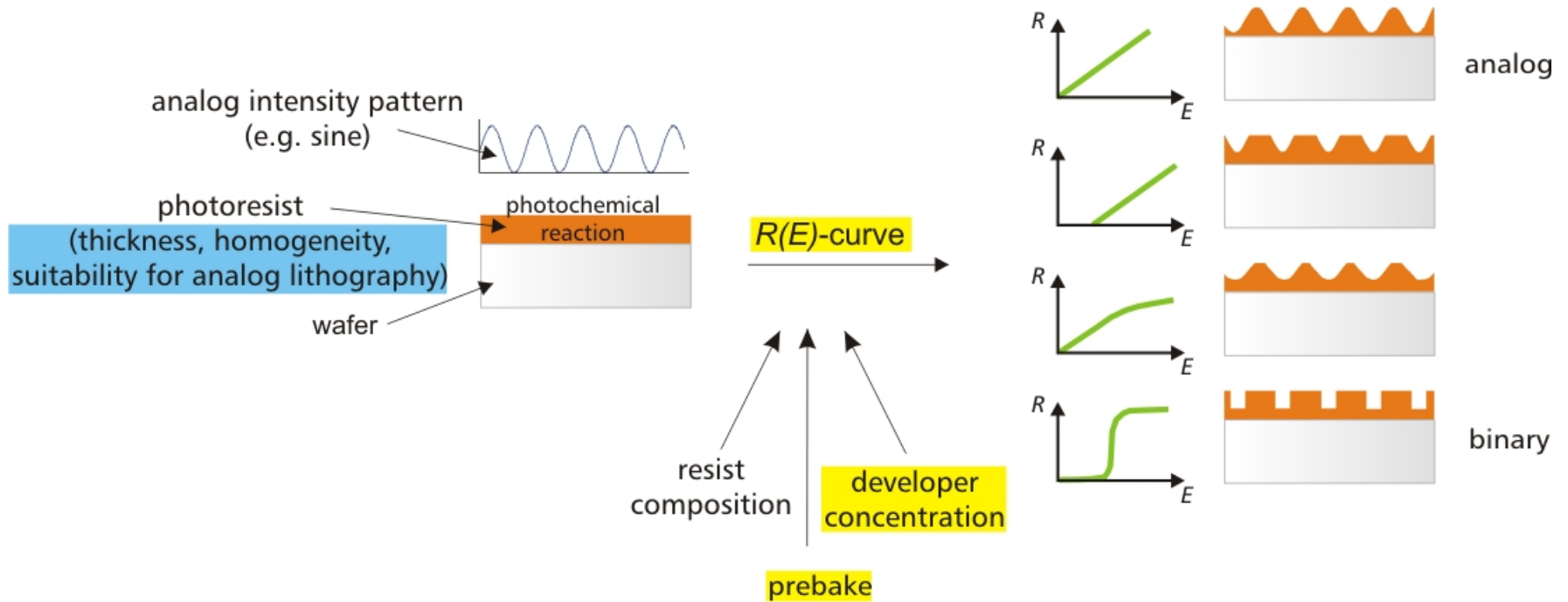


Handwritten text: *2/2/2*



Project: KOMPHOR

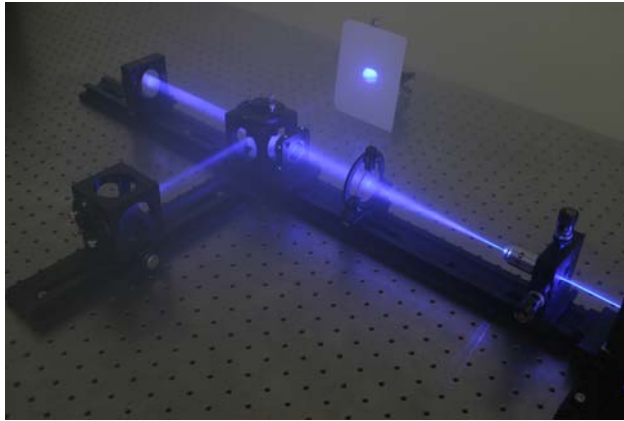
Analog lithography



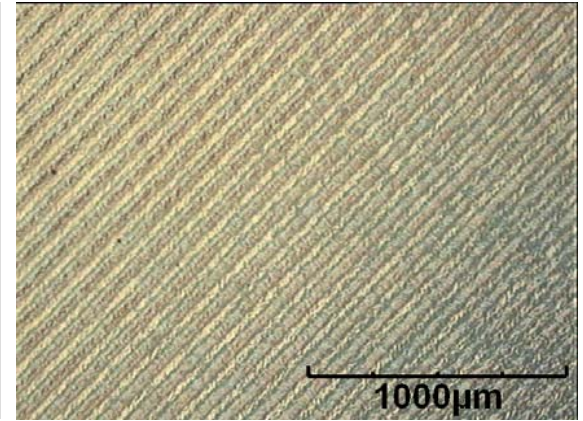
Project: KOMPHOR

Generation of sinusoidal profiles through interferometric illumination

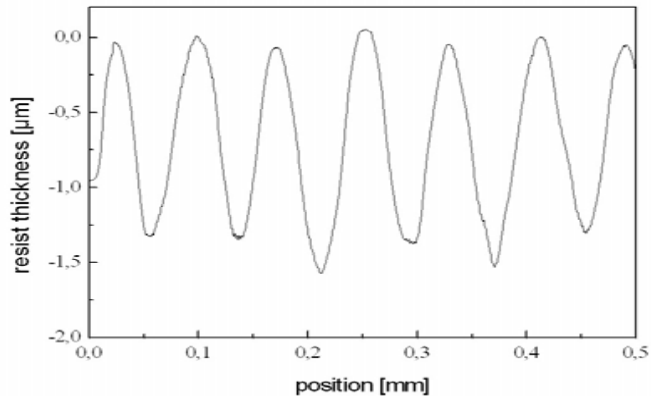
optical
setup:
Michelson
Interfero-
meter



microscope
picture



profilo-
meter scan



microscope
picture after
postbake

