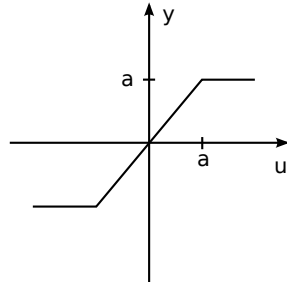


# Adaptive und strukturvariable Regelungssysteme

## Beiblatt zu elementaren Kennliniengliedern

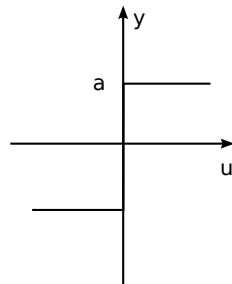
Begrenzungskennlinie

$$y = \begin{cases} a & u > a \\ u & |u| \leq a \\ -a & u < -a \end{cases}$$



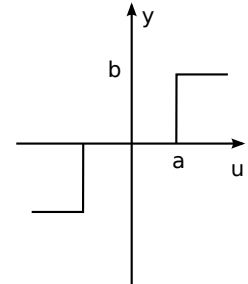
Zweipunktglied

$$y = \begin{cases} a & u > 0 \\ \text{n. def.} & u = 0 \\ -a & u < 0 \end{cases}$$



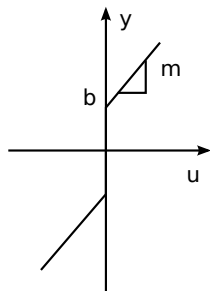
Dreipunktglied

$$y = \begin{cases} b & u > a \\ 0 & |u| \leq a \\ -b & u < -a \end{cases}$$



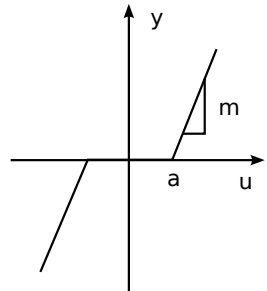
Vorlast

$$y = \begin{cases} mu + b & u > 0 \\ \text{n. def.} & u = 0 \\ mu - b & u < 0 \end{cases}$$



Totzone

$$y = \begin{cases} m(u - a) & u > a \\ 0 & |u| \leq a \\ m(u + a) & u < -a \end{cases}$$



Zweipunkt-Hysterese

$$y = \begin{cases} b & u > a \\ b \text{ sign}(u - a \text{ sign}(\dot{u})) & |u| \leq a \\ -b & u < -a \end{cases}$$

