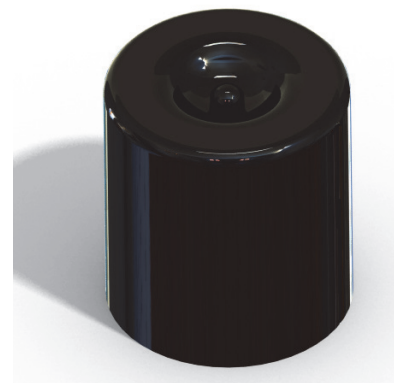
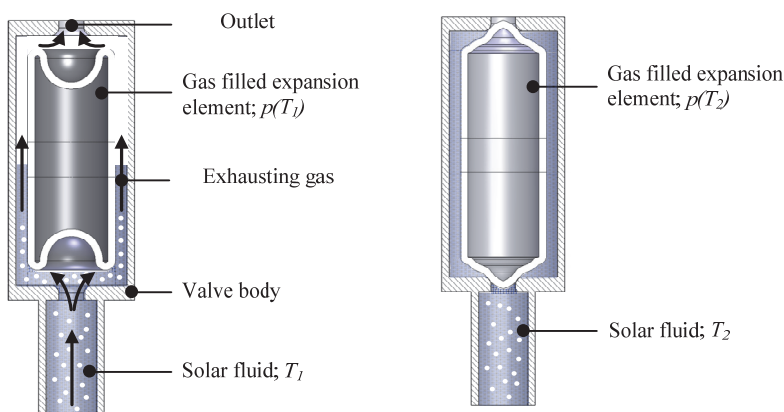


## Thermally controlled air bleed valve for solar heat installations

**System:** Multiple curved diaphragm under pressure

### Functional prinziple:

The gas filled valve body is hermetical sealed and offers a multiple curved diaphragm at the front end. The pressure-displacement-characteristic of the diaphragm is directly adjusted due to its geometric shape. With increasing temperature the gas inside the valve body is expanding. At a boundary temperature there is a sudden move out of the diaphragm which effects a valve closure.



### Features and Advantages:

- intelligent mechanics
- no additional sensors/actors needed
- no manual bleeding of the solar heat installation
- boundary temperature adjustable
- maintenance-free
- low factory costs

Gefördert durch:



aufgrund eines Beschlusses  
des Deutschen Bundestages